



Since 2009

**THE POWER BEHIND DISTRIBUTION**

**Catalog**

[www.adsmetal.com.tr](http://www.adsmetal.com.tr)



• <b>Who are We?</b>	<b>3</b>
• <b>Our Facilities</b>	<b>4</b>
• <b>Global Capacity</b>	<b>5</b>
• <b>Product Group</b>	<b>6</b>
• <b>Production Process</b>	<b>20</b>
• <b>Our Approach to Quality</b>	<b>22</b>
• <b>Certificates and Approvals</b>	<b>23</b>
• <b>New Investment</b>	<b>24</b>

# Who are We?

ADS Metal is an industrial company specialized in the production of transformer tanks, corrugated walls, and related metal components for distribution and power transformers since 2009 in Ankara, Türkiye. With its advanced engineering infrastructure, high-tonnage production capacity, and strong operational capabilities, the company provides reliable and sustainable solutions to transformer manufacturers.

# Our Facilities

**22,900 m<sup>2</sup> of indoor**

**10,200 m<sup>2</sup> of outdoor**



# Global Capacity

**4**

**FACTORIES**

**25+**

**COUNTRIES**

**4**

**CONTINENTS**



# Product Group



**Power Transformer Tanks**



**HDG Transformer Tanks**



**Distribution Transformer Tanks**

# Product Group



**Corrugated Walls**



**Cable Boxes**

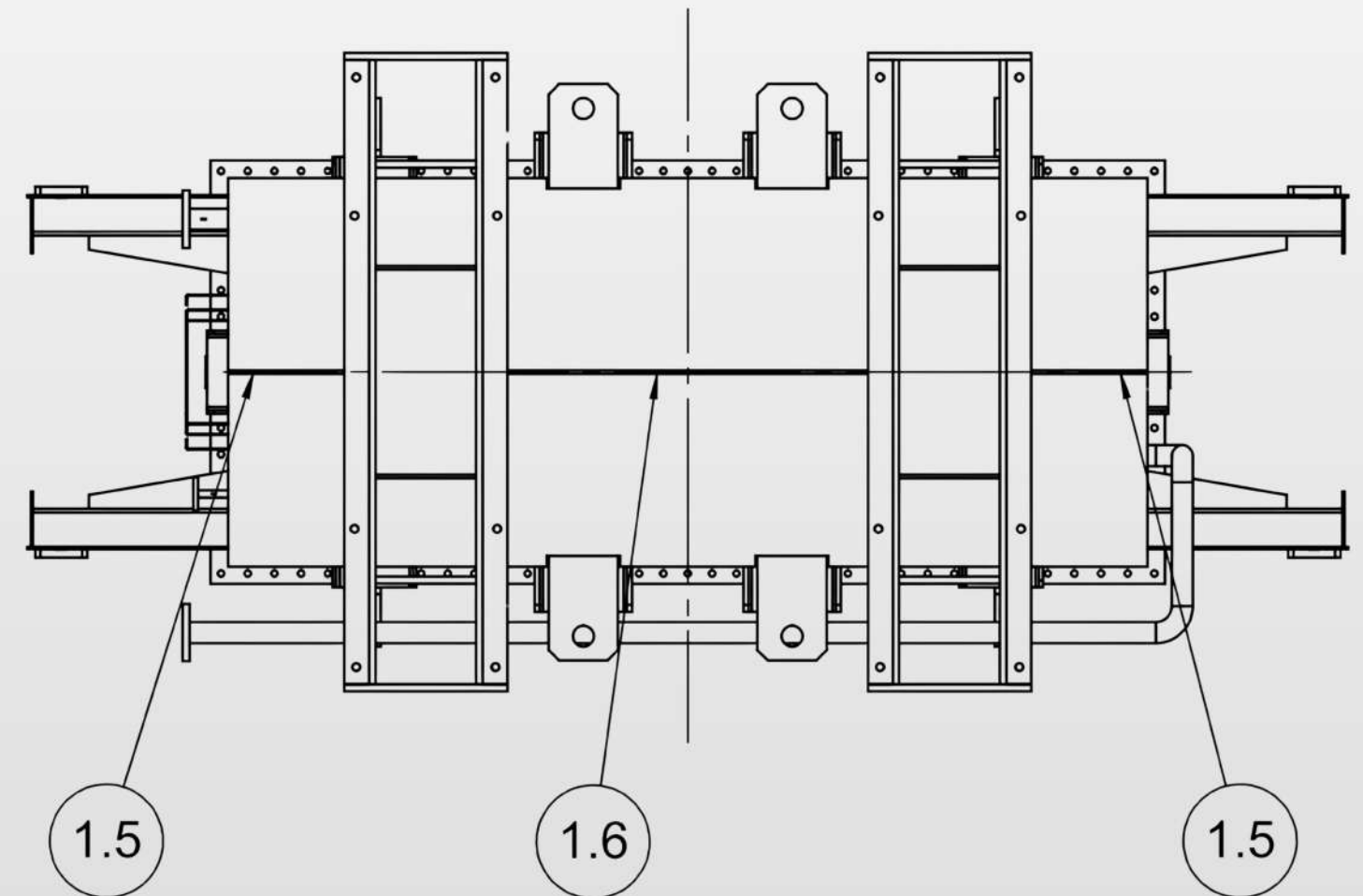


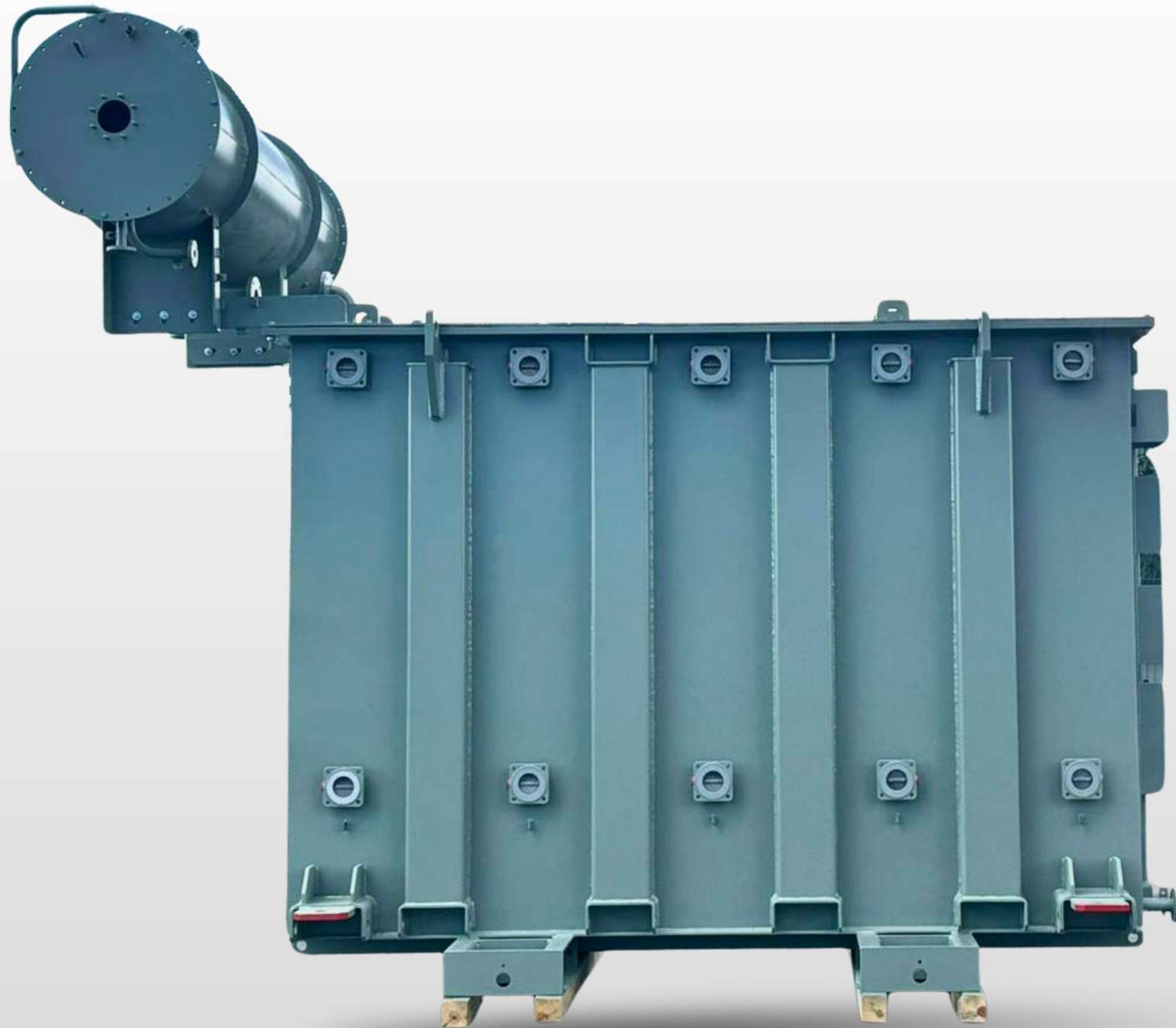
**Conservatories Tanks**

# Power Transformer Tanks

Power transformer tanks are robust metal enclosures designed to house and protect the internal components of electrical power transformers, including the core, windings, and insulating oil. They provide mechanical strength and environmental protection against moisture, dust, corrosion, and external impacts. Depending on the transformer design, tanks may include radiators, conservators, bushings, and pressure relief devices to support cooling and operational safety. Their construction and sealing are critical for ensuring long-term reliability, insulation integrity, and safe operation in power transmission and distribution systems.

ADS Metal experienced teams produce power transformer tanks and auxiliary components with comprehensive technical specifications.





**Material: S235JR, S235JO, S235J2, S355JR, S355JO, S355J2+N, SS304, SS316L**

**Surface Treatment: RAL color codes are specified by the customer, UL certified on demand coatings**

**Corrosion Protection: Coatings can be applied within the range of C3-L to C5-VH.**

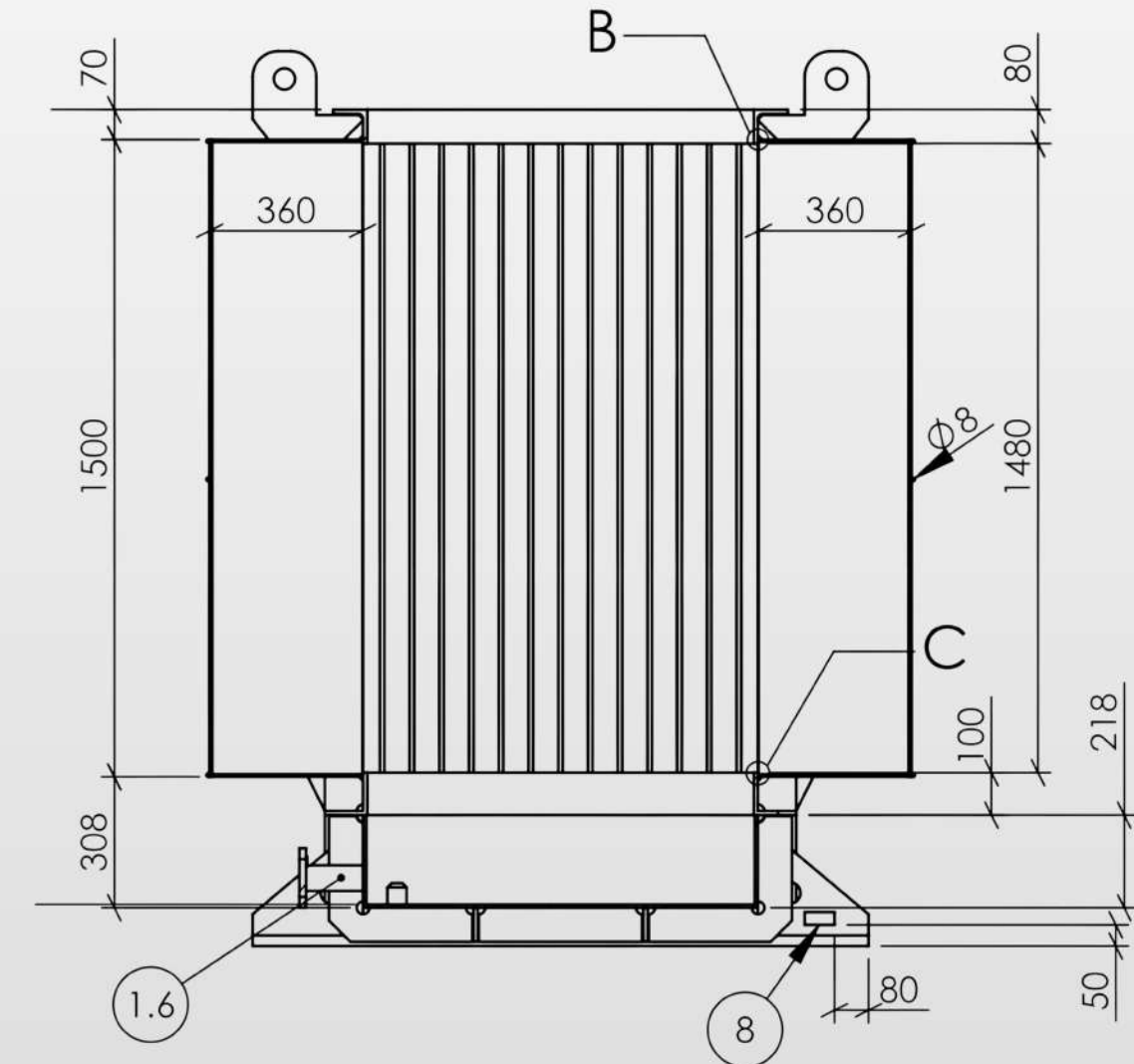
**Welding Technique: MIG/MAG, TIG**

**Weight: Up to 40 tons**

**Capacity: 150 tons/month**

# Distribution Transformer Tanks

**Distribution transformer tanks are metal enclosures that contain and protect the active parts of distribution transformers, such as the core, windings, and insulating medium. They are designed to withstand outdoor environmental conditions while providing structural support and protection against contamination, moisture, and mechanical damage. These tanks also help dissipate heat produced during normal transformer operation, often through corrugated walls or attached cooling fins. Their durability and sealing performance are essential for maintaining transformer efficiency, insulation quality, and operational lifespan.**





**Material: S235JR, S235JO, S235J2, S355JR, S355JO, S355J2+N, SS304, SS316L, DC01**

**Surface Treatment: RAL color codes are specified by the customer, UL certified on demand coatings**

**Corrosion Protection: Coatings can be applied within the range of C3-L to C5-VH.**

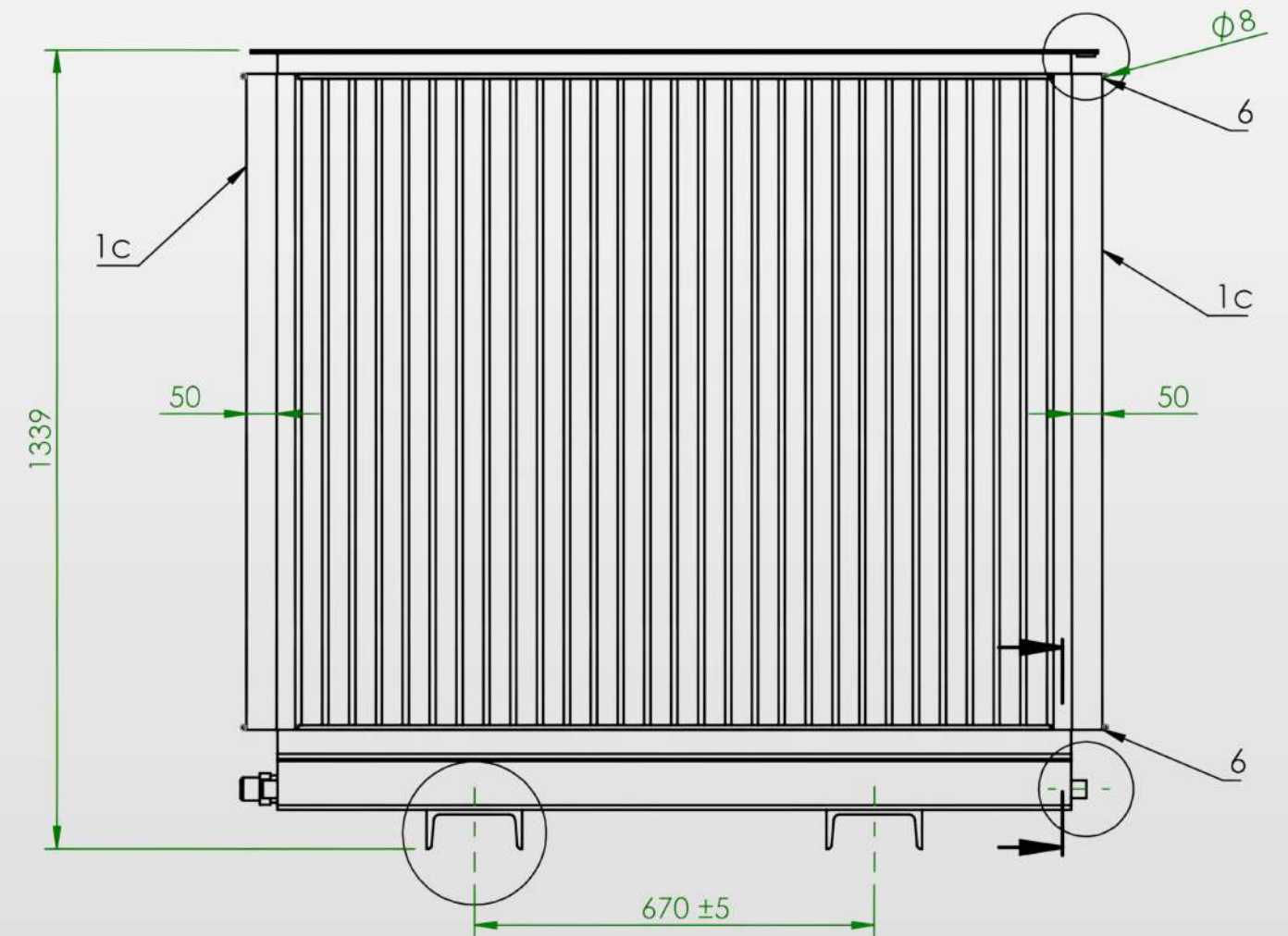
**Welding Technique: MIG/MAG, TIG**

**Weight: Up to 10 tons**

**Capacity: 500 tons/month**

# HDG Transformer Tanks

HDG (Hot-Dip Galvanized) transformer tanks are transformer enclosures coated with a protective zinc layer through the hot-dip galvanizing process to provide superior corrosion resistance. These tanks are especially suitable for outdoor and harsh environmental conditions such as high humidity, coastal areas, and industrial environments. The galvanized coating protects the steel surface against rust and extends the operational lifespan of the transformer tank with minimal maintenance requirements. They are widely preferred in power distribution and infrastructure projects requiring long-term reliability.





**Material:** S235JR, S235JO, S235J2, S355JR, S355JO, S355J2+N, SS304, SS316L, DC01

**Surface Treatment:** RAL color codes are specified by the customer, UL certified on demand coatings

**Corrosion Protection:** Coatings can be applied within the range of C3-L to C5-VH. ISO 1461 production standards are applied

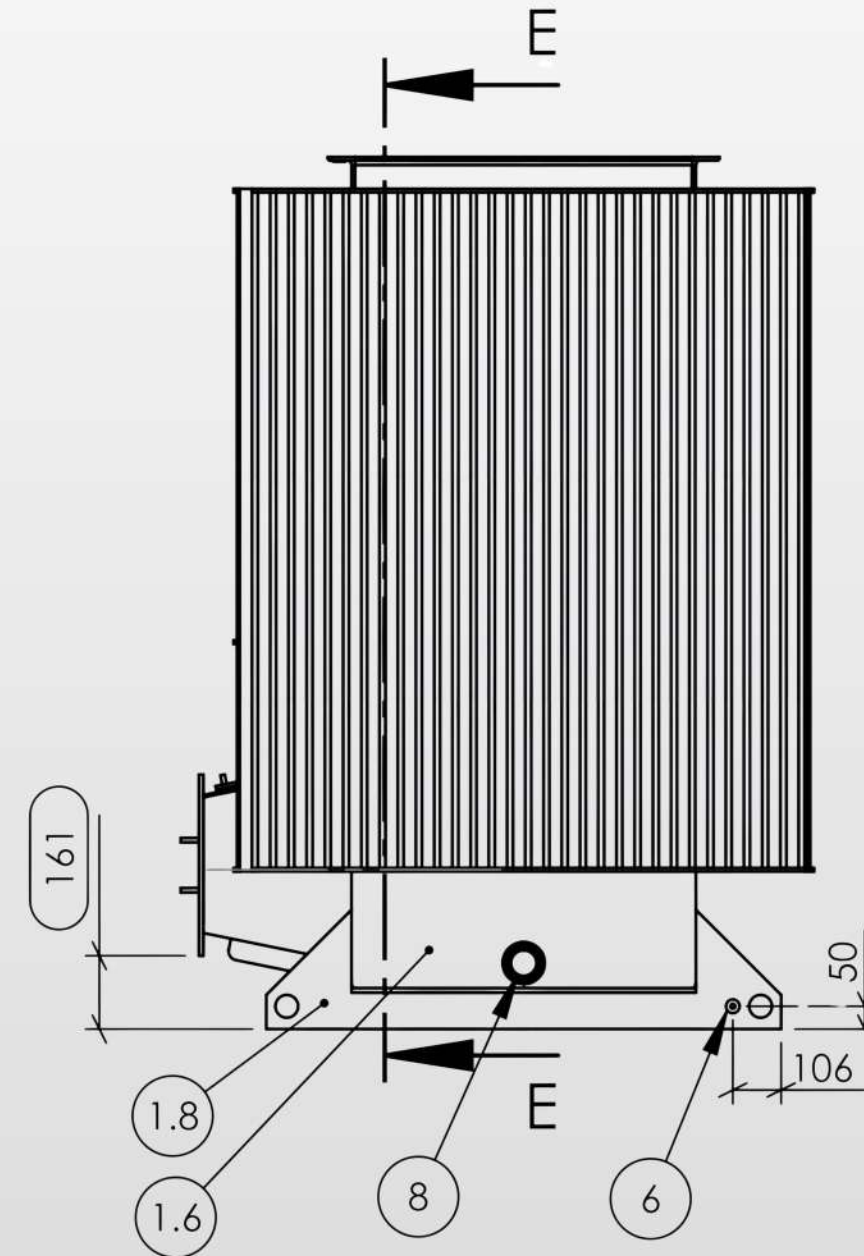
**Welding Technique:** MIG/MAG, TIG

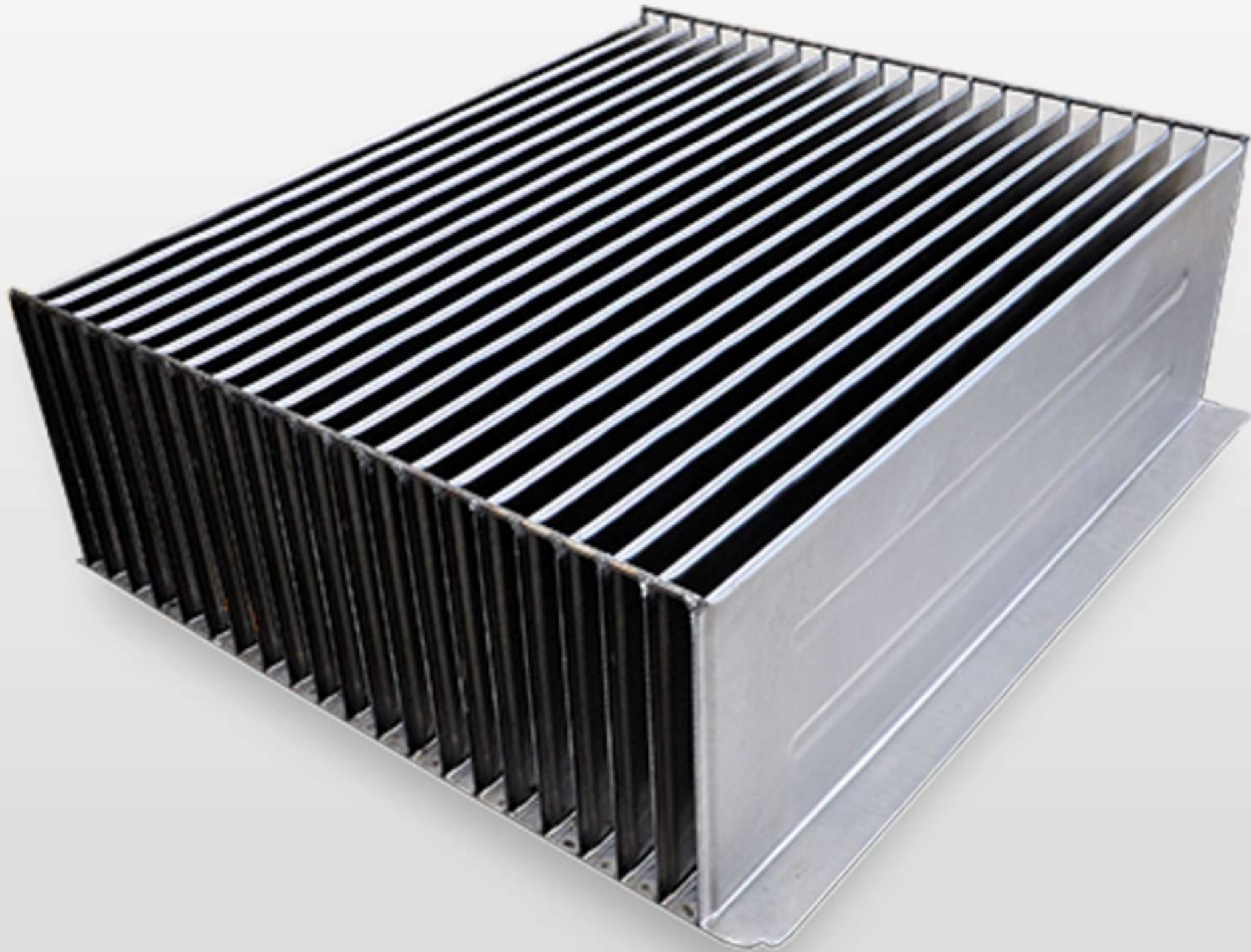
**Dimensions:** 2200 x 1830 x 2000 mm

**Capacity:** 20 tons/month

# Corrugated Walls

Corrugated walls are specially formed metal panels used in transformer tanks to provide both structural flexibility and efficient cooling performance. Their corrugated shape increases the surface area of the tank, allowing heat generated inside the transformer to dissipate more effectively into the surrounding environment. In addition to cooling, corrugated walls compensate for oil volume expansion and contraction caused by temperature changes, reducing the need for a separate conservator system in many transformer designs. They are manufactured through precision forming and welding processes to ensure mechanical strength, leak tightness, and long-term durability.





**Material:** S235JR, S235J0, S235J2, S355JR, S355J0, S355J2+N, SS304, SS316L, DC01

**Surface Treatment:** RAL color codes are specified by the customer, UL certified on demand coatings

**Corrosion Protection:** Coatings can be applied within the range of C3-L to C5-VH.

**Welding Technique:** MIG/MAG, TIG, Spot

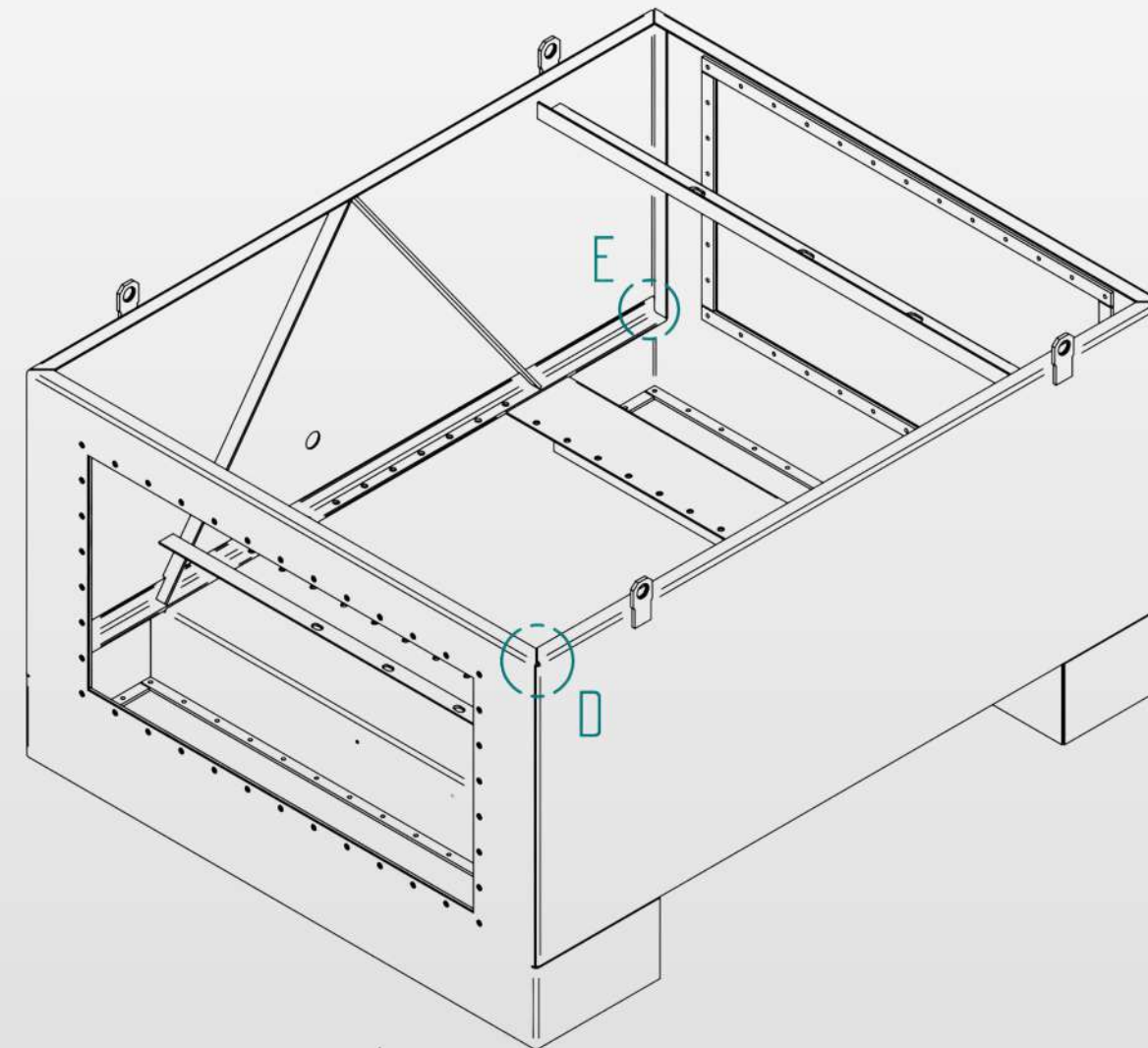
**Panel Heights:** 400 and 1,600 mm

**Fin pitch:** 45 mm (minimum 35 mm upon request)

**Capacity:** 1200 tons/month

# Cable Boxes

Cable boxes are metal enclosures used in electrical transformer and power distribution systems to provide secure connection points for incoming and outgoing power cables. They protect cable terminations and electrical connections from environmental conditions, mechanical damage, moisture, and dust. Cable boxes are designed to ensure safe insulation, reliable electrical performance, and easy access for installation and maintenance operations. Depending on the application, they may include bushings, terminal arrangements, sealing systems, and grounding components.





**Material: S235JR, S235J0, S235J2, S355JR, S355J0, S355J2+N, SS304, SS316L**

**Surface Treatment: RAL color codes are specified by the customer, UL certified on demand coatings**

**Corrosion Protection: Coatings can be applied within the range of C3-L to C5-VH.**

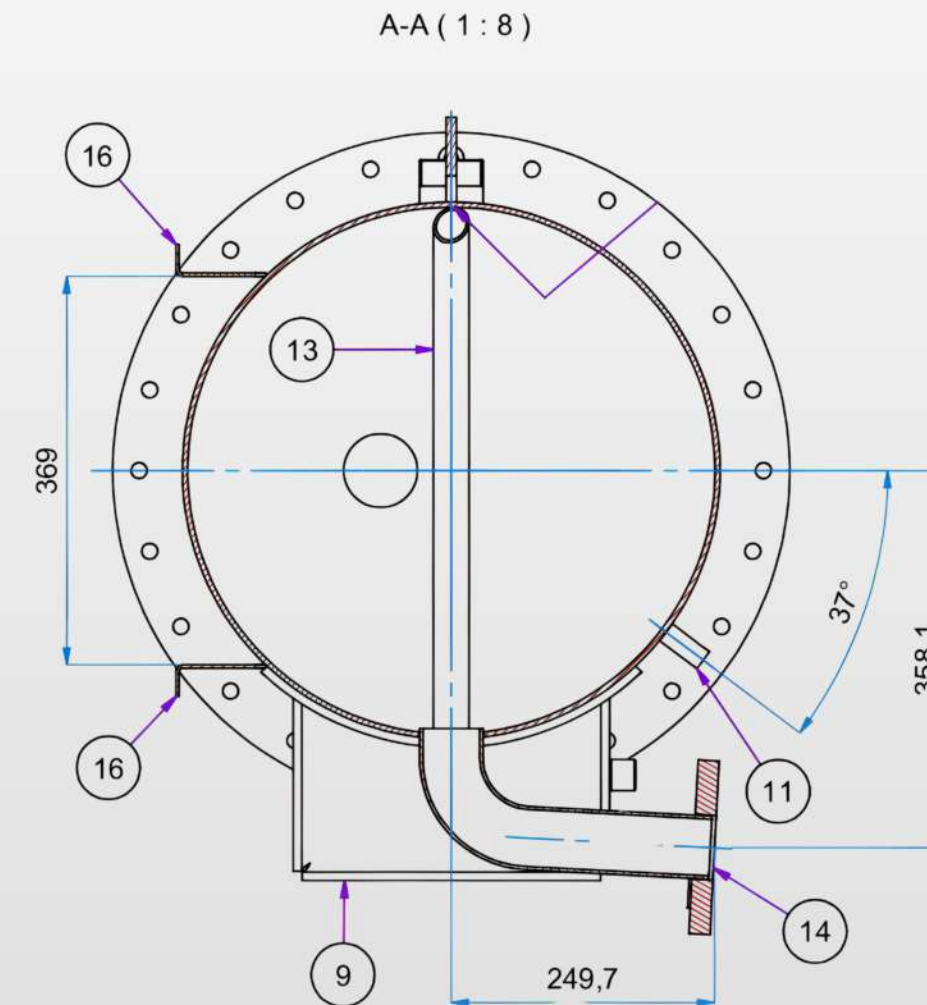
**Welding Technique: MIG/MAG, TIG**

**Weight: Up to 500 kg**

**Capacity: 2 tons/month**

# Conservatories Tanks

Conservatories tanks are auxiliary components used in oil-filled transformers to accommodate the expansion and contraction of insulating oil caused by temperature variations during operation. They help maintain proper oil levels inside the transformer while minimizing direct contact between the insulating oil and ambient air, reducing moisture absorption and oxidation. Conservatories tanks are typically connected to the main transformer tank through piping systems and may include accessories such as oil level indicators, dehydrating breathers, and protection devices.





**Material: S235JR, S235JO, S235J2, S355JR, S355JO, S355J2+N, SS304, SS316L**

**Surface Treatment: RAL color codes are specified by the customer, UL certified on demand coatings**

**Corrosion Protection: Coatings can be applied within the range of C3-L to C5-VH.**

**Welding Technique: MIG/MAG, TIG**

**Weight: Up to 400 kg**

**Capacity: 5 tons/month**

# Production Process

**DESIGN.** The design process of transformer tanks is carried out according to customer requirements, international standards, and transformer operating conditions. Detailed manufacturing drawings and quality documentation are prepared before production begins.



**CUTTING-BENDING.** High-quality metal sheets are processed using precision CNC and laser cutting technologies to achieve accurate dimensions and clean edges. The cut materials are shaped through bending operations to form tank walls, covers, frames, and structural reinforcements. Cutting and bending operations are performed in six lines.

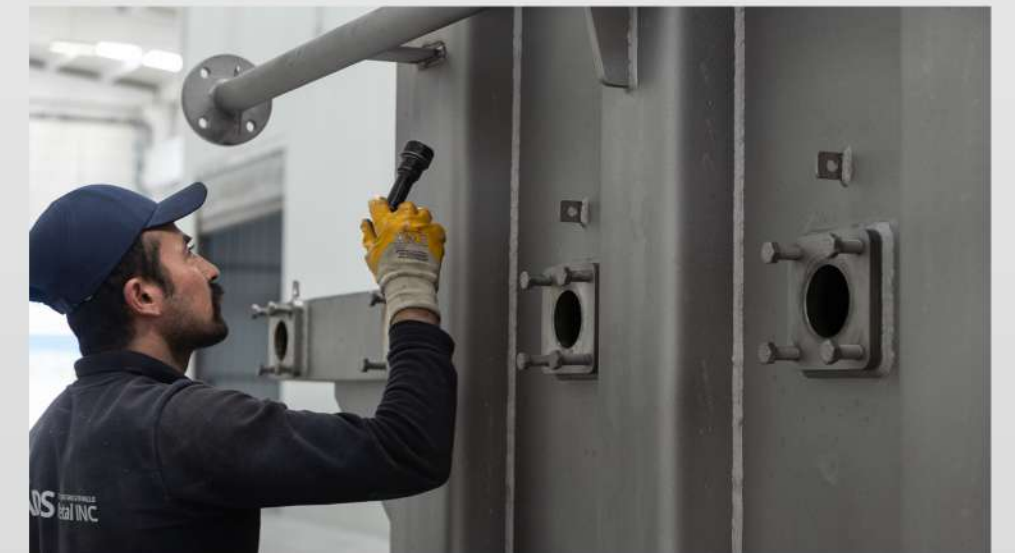
**WELDING.** The prepared components are assembled and welded by certified welders using qualified welding procedures. Welding operations are performed to guarantee structural strength, leak tightness, and long-term reliability under operating conditions. Critical weld seams are inspected visually and, when required, through non-destructive testing methods. In 40 welding stations are used welding techniques such as TIG, MIG/MAG, spot.



**COATING.** After cleaning and shot blasting to remove contaminants and improve coating adhesion, protective primer and paint systems are applied to provide high resistance against corrosion and environmental conditions. Coating thickness and surface quality are monitored according to customer specifications and industry standards.



**QUALITY.** Comprehensive quality control procedures are implemented throughout all stages of production. Dimensional inspections, weld quality checks, and leak tests are performed to verify compliance with technical specifications and standards.



# Our Approach to Quality

- To guarantee complete control of welding operations, material traceability, and documented compliance, ADS Metal implements a quality system certified to ISO 9001 and ISO 3834-2.
- ADS Metal has extensive experience with PPAP documentation, enabling us to meet customer requirements for part approvals, initial sample inspections, and change control.
- The quality team at ADS Metal continuously tracks Key Performance Indicators (KPIs) and performs Process FMEAs to assess and mitigate potential production risks, maintaining consistent process reliability.
- Our evolving ERP-based quality module facilitates non-conformity tracking, corrective actions, and audit-ready documentation, reinforcing our commitment to transparency and continuous improvement.
- ADS Metal's quality system has been successfully audited by leading OEMs, and by independent certification bodies, confirming our ability to comply with the highest quality requirements.



# Certificates and Approvals

**CERTIFICATE**  
Certificate No: 2025-01-3D-25-0004-118

ADS METAL ELEKTRİK İTHALAT İHRACAT SANAYİ VE TİCARET A.Ş.  
Başkent OSB Başkent Bulvarı No:96 Malıköy-Sincan-ANKARA  
Malıköy OSB Mahallesi 18.Cadde No:2 Sincan-ANKARA

Has been audited according to

**TS EN ISO 3834-2**  
Quality Requirements For Fusion Welding of Metallic Materials - Part 2 : Comprehensive Quality Requirements

And meets the requirements in the below scope

Production Scope	Production of Transformer Tanks, Wave Walls and Metal Accessories Used in Electrical Transformers and Manufacturing Techniques Required for Production, Surface Treatment and Paint Application.
Material Group	EN 15608 1.1
Welding Process	135 , 141
Welding Coordinator	Bedirhan ÖZENER

Validity Date: 28.01.2028

İstanbul 28.01.2025  
Place Issue Date Revision Date Rev.No

TS EN ISO 3834-2  
3D in Çelik Belgelendirme Mühürsüz Sistem ve Derinlik Üstünlüğü  
Adres: Orta Mah. Fıstık Sok. No:10 Çankaya/İSTANBUL  
T: +90 212 402 21 10 P: +90 212 532 71 80 E: info@tsi.org.tr

**SERTİFİKA**

EN ISO 9001:2015 Yönetim Sistemi

ADS METAL ELEKTRİK İTHALAT İHRACAT SANAYİ TİCARET ANONİM ŞİRKETİ

Merkez: Malıköy Başkent OSB Mah. Başkent OSB Bulvarı No:96 TR-06909 Sincan / ANKARA  
Şube: Malıköy Anadolu OSB Mahallesi, Anadolu OSB 18.Cad. no:2 TR-06909 Sincan / ANKARA

Yukarıda belirtilen kuruluşun, TÜV AUSTRIA Prosedürlerine göre Standartın şartlarını karşılayıp karşılanmadığı.

Kapsam:

Elektrik Trafolarında Kullanılan Trafo Tanklarının, Dalga Duvarlarının ve Metal Aksesuarlarının Üretimi ve Üretim İçin Gerekli İmalat Tekniklerinin, Yüze İşlemlerinin ve Boyanım Uygulanması.

Sertifika Kayıt No: 2010223017958 2025-10-23 tarihine kadar geçerlidir. İlk Belgelendirme: 2023-10-24  
E. Pichler Belgelendirme Kuruluşu TÜV AUSTRIA GMBH  
Vienna, 2025-12-02

Belgelendirme TÜV AUSTRIA Teknik ve Belgelendirme Prosedürlerine uygun olarak uygulanmış ve gözlemler düzenli olarak yapılmaktadır. TÜV AUSTRIA GMBH Deutschlandstraße 10 A-1230 Wien www.tuv.at

IAF

**SERTİFİKA**

EN ISO 14001:2015 Yönetim Sistemi

ADS METAL ELEKTRİK İTHALAT İHRACAT SANAYİ TİCARET ANONİM ŞİRKETİ

Merkez: Malıköy Başkent OSB Mah. Başkent OSB Bulvarı No:96 TR-06909 Sincan / ANKARA  
Şube: Malıköy Anadolu OSB Mahallesi, Anadolu OSB 18.Cad. no:2 TR-06909 Sincan / ANKARA

Yukarıda belirtilen kuruluşun, TÜV AUSTRIA Prosedürlerine göre Standartın şartlarını karşılayıp karşılanmadığı.

Kapsam:

Elektrik Trafolarında Kullanılan Trafo Tanklarının, Dalga Duvarlarının ve Metal Aksesuarlarının Üretimi ve Üretim İçin Gerekli İmalat Tekniklerinin, Yüze İşlemlerinin ve Boyanım Uygulanması.

Sertifika Kayıt No: 2010423017957 2025-10-23 tarihine kadar geçerlidir. İlk Belgelendirme: 2023-10-24  
E. Pichler Belgelendirme Kuruluşu TÜV AUSTRIA GMBH  
Vienna, 2025-12-02

Belgelendirme TÜV AUSTRIA Teknik ve Belgelendirme Prosedürlerine uygun olarak uygulanmış ve gözlemler düzenli olarak yapılmaktadır. TÜV AUSTRIA GMBH Deutschlandstraße 10 A-1230 Wien www.tuv.at

IAF

**SERTİFİKA**

ISO 45001:2018 Yönetim Sistemi

ADS METAL ELEKTRİK İTHALAT İHRACAT SANAYİ TİCARET ANONİM ŞİRKETİ

Merkez: Malıköy Başkent OSB Mah. Başkent OSB Bulvarı No:96 TR-06909 Sincan / ANKARA  
Şube: Malıköy Anadolu OSB Mahallesi, Anadolu OSB 18.Cad. no:2 TR-06909 Sincan / ANKARA

Yukarıda belirtilen kuruluşun, TÜV AUSTRIA Prosedürlerine göre Standartın şartlarını karşılayıp karşılanmadığı.

Kapsam:

Elektrik Trafolarında Kullanılan Trafo Tanklarının, Dalga Duvarlarının ve Metal Aksesuarlarının Üretimi ve Üretim İçin Gerekli İmalat Tekniklerinin, Yüze İşlemlerinin ve Boyanım Uygulanması.

Sertifika Kayıt No: 2011623017958 2025-10-23 tarihine kadar geçerlidir. İlk Belgelendirme: 2023-10-24  
E. Pichler Belgelendirme Kuruluşu TÜV AUSTRIA GMBH  
Vienna, 2025-12-02

Belgelendirme TÜV AUSTRIA Teknik ve Belgelendirme Prosedürlerine uygun olarak uygulanmış ve gözlemler düzenli olarak yapılmaktadır. TÜV AUSTRIA GMBH Deutschlandstraße 10 A-1230 Wien www.tuv.at

IAF

**CERTIFICATE**

Management system as per ISO 45001:2018

In accordance with TÜV AUSTRIA procedures, it is hereby certified that

ADS METAL ELEKTRİK İTHALAT İHRACAT SANAYİ TİCARET ANONİM ŞİRKETİ

Headquarter: Malıköy Başkent OSB Mah. Başkent OSB Bulvarı No:96 TR-06909 Sincan / ANKARA  
Branch: Malıköy Anadolu OSB Mahallesi, Anadolu OSB 18.Cad. no:2 TR-06909 Sincan / ANKARA

Yukarıda belirtilen kuruluşun, TÜV AUSTRIA Prosedürlerine göre Standartın şartlarını karşılayıp karşılanmadığı.

Kapsam:

Production of Transformer Tank, Corrugated Walls and Other Steel Accessories For Electric Transformers by Using Required Manufacturing Technics, Surface Treatments and Paint Applications.

Sertifika Registration No.: 2011623017958 Valid until: 2025-10-23 Initial certification: 2023-10-24  
E. Pichler Certification Body at TÜV AUSTRIA GMBH  
Vienna, 2025-12-02

This certification was conducted in accordance with TÜV AUSTRIA auditing and certification procedures and is subject to regular surveillance audits. TÜV AUSTRIA GMBH Deutschlandstraße 10 A-1230 Wien www.tuv.at

IAF

# New Investment

**Our new facility construction at Anadolu OSB has been launched in late April, 2026.**

**Prospective Launch Date:**

**Second quarter of 2027**

**Employment Objective:**

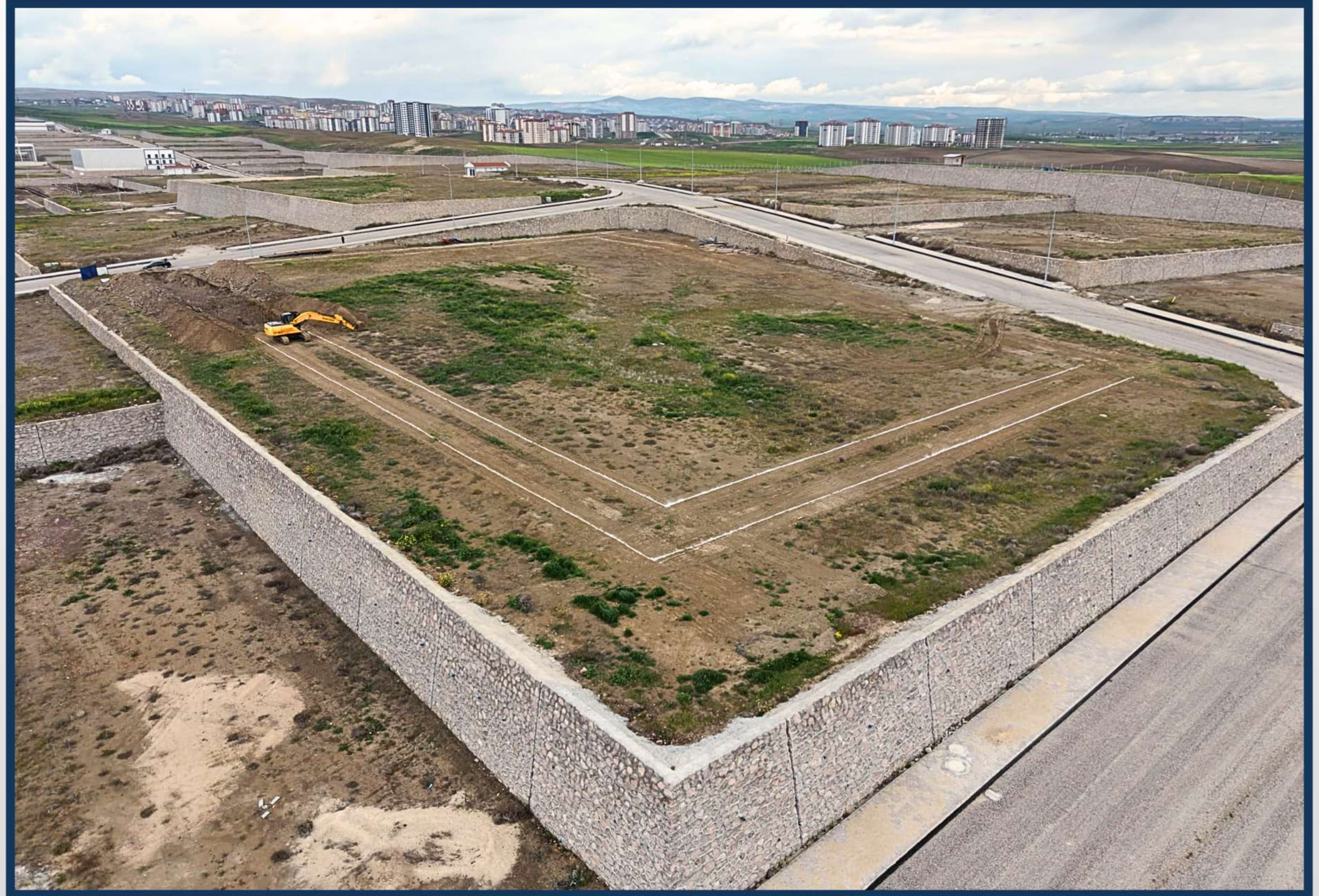
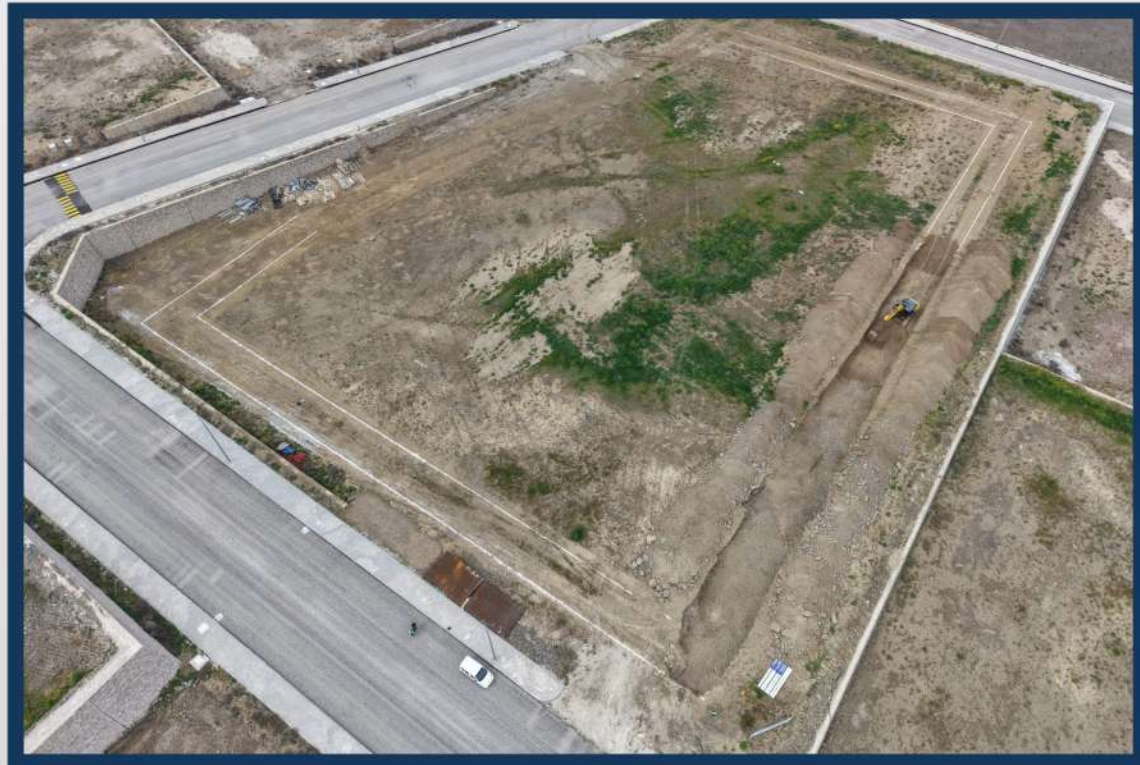
**Up to 100 new jobs**

**Crane Capacity:**

**Up to 40 tons**

**Indoor and Outdoor Production Area:**

**17,935 m<sup>2</sup>**





Anadolu Industrial Zone, 18. Str. No: 2  
Malıköy - Sincan - Ankara / TÜRKİYE

Baskent Industrial Zone, Baskent Boulevard No: 96  
Malıköy - Sincan Ankara / TÜRKİYE



+90 544 815 23 19  
+90 533 575 94 48



[www.adsmetal.com.tr](http://www.adsmetal.com.tr)



[sales@adsmetal.com.tr](mailto:sales@adsmetal.com.tr)

